

Introducing the

P189A



Sense-iT over-bed
bed vacation monitor

The P189 'Watch-iT' is mounted above the bed and designed to detect bed vacation where the use of bed sensors is not suitable.

The alarm is raised on the Alert-iT pager. The unit can be set to allow the occupant to leave the bed for a set period before the alarm is raised to allow the user to use the bathroom.

If an earlier alarm is required, the detection can be set to send an alarm as soon as the patient sits on the edge of the bed.

 Time Delays	Available Time Delays for Bed Exit
	20 mins
	10 mins
	5 mins
	3 mins
	0 mins (Instant)
	0 mins (Bed Edge)

 Facts	Mains powered
	No battery backup
	Failsafe radio
	Dimensions: H68mm W166mm D 77mm
	Remote control
	Battery 3xAAA

Introducing the

P189A

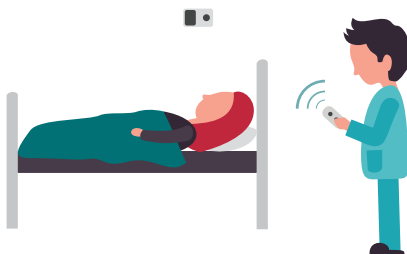
Sense-iT over-bed
bed vacation monitor



So simple to use...

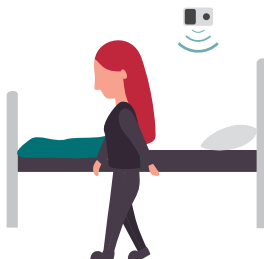
STEP 1

Carer activates the Watch-iT, using the remote control.



STEP 2

The Watch-iT alerts the Alert-iT pager as the user leaves the bed or after a set delay time if the user hasn't returns.



STEP 3

Carer responds and resets the Watch-iT, using the remote control.



www.alert-it.co.uk
sales@alert-it.co.uk
01530 239 900

