



## P137 Advanced Pager

### User Handbook

P137BAA(64 Channel), P137CAA(8 Channel)

Applicable to software issue 8.12+

[www.alert-it.co.uk](http://www.alert-it.co.uk)



# Contents

Features.....	4
Basics.....	4
Click and Go.....	4
User Level Configuration.....	4
Basic User.....	5
Extended User.....	5
Operation.....	5
Turn On.....	5
Turn Off.....	5
Backlight.....	5
Silence Alarms.....	5
Individual Pagers (typically care homes).....	6
Communal Pagers (typically supporting a Nursing group in a hospital).....	6
Supervisor/Maintenance Pager.....	6
Menu control Concepts.....	7
Example edit screens.....	7
USER Menu Structure.....	8
Supervisor Menu Structure.....	9
Details of Menu Features.....	10
Answering an Alarm Call.....	11
Pod Staff: Changing a Room Allocation.....	12
Maintenance.....	13
Safety Notices.....	14

# Features

The P137 Pager is not a general pager adapted for care use but one designed especially for Plesiocare in professional care homes and hospital wards. The specific features for this are:

- Antimicrobial plastic & fascia proven to kill MRSA & C Difficile
- Medical Device Class 1 with Failsafe operation for life & health critical monitoring
- Large character backlit screen with simple no interaction alarm indications
- Cancel at source for total compliance with duty of care.
- Long radio range
- Long battery life to cover over 80 hours continuous use on one charge
- Three alarm severity levels (plus fault indication), configurable for individual or group use.
- Advanced loud audible tones indicating severity level and multiple alarm activity.
- Easy reprogramming of monitor name/location
- Simple cloning for multi-pager environments

## Basics

This handbook assumes the pager has been fully configured by your supervisor to work with all the monitors in your “home” or “ward” and has the correct operational protocol enabled. This book gives details of a variety of standard protocols that may be relevant as well as more general control features accessible to the two levels of user

## Click and Go

In normal use all carers have a very simply protocol:

- The pager will indicate the location and severity level of an alarm
- The indication may be accompanied by audible alert and/or vibrator
- The carer can temporarily silence the sound with one key press
- The carer attends the user/patient and reset the alarm in their room.
- The pager automatically rests itself.

## User Level Configuration

There are some very simple basic parameters the user can change, depending on the level authorised by the supervisor

## Basic User

All users can:

- Rename the source of an alarm. This facilitates change of user or change of room.
- Change basic interface features such as allowing sounds or vibration (silent is only allowed at Supervisor level).
- The basic user cannot turn-off the pager, which ensures full duty of care compliance (which extends to warning message if the battery is removed to effect a turn-off)

## Extended User

As well as being able to turn off the pager, the default “extended” user mode allows for some simple housekeeping tasks, such a resetting alarms that may have become stuck if the monitor is damaged.

# Operation

## Turn On

Press MENU for 3 seconds and the display come on and show the PRODUCT name followed by 4 digits for the software Version/Issue and 4 digits for a security checksum

Menu: Press 3 sec  
Turn off: via Menu

## Turn Off

Press the MENU for 3 seconds until “Setup and Edit” is displayed, followed by “LIST”. Press the right key. If the Extended User mode is disabled then enter the password. The next menu item is Reset All, then Turn Off. Press the SELECT (up) button. DO NOT REMOVE batteries to turn off the unit as this will damage the battery contact.



## Backlight

The Backlight automatically illuminates for 15 seconds after an alarm is received or if any key is pressed. It is always enabled for menu modes.

## Silence Alarms

Press the UP (sel) key to silence an active alarm.

## Individual Pagers (typically care homes)

The supervisor can set the pager so that:

- The pager only responds to some or all of the monitors in the home
- The carer is not troubled by maintenance information (eg low battery in a monitor or a NEW monitor discovered on-site)
- Multiple alarms are queued behind the current alarm (unless of a higher severity level) until the carer resets the current alarm.
- The care staff can change the name/location of any monitor
- Staff may be barred from turning off the pager

## Communal Pagers (typically supporting a Nursing group in a hospital)

The supervisor can set the pager so that:

- The pager only responds to some or all of the monitors on the ward
- The carer is not troubled by maintenance information (eg low battery in a monitor or a NEW monitor discovered on-site)
- A second alarm of the same severity as the current will overwrite the screen on the basis that the first is being attended already.
- The care staff can change the name/location of any monitor
- Staff may be barred from turning off the pager

## Supervisor/Maintenance Pager

If the carer pagers are restricted to patient alarms only, then at least one pager in the system MUST

- Indicate faults (such a battery low)
- Indicate NEW monitors in the area (optional)
- Can be set on SILENT provided regularly reviewed.

# Menu control Concepts



Hold down 3 sec to enter Set-Up and Edit menus. Press to abort menus, one level at a time also used to scroll through numbers & letters as required.



Scroll back and forth through menus or select settings shown on the display above the key.



Press to display list of active alarms. In menu mode also used to scroll through numbers and letters or select an option.

## Example edit



Scroll through menu and select option. Menu drops back a level in the menu.



Select/Menu scrolls the number/letter over cursor. Left key accepts the value, right key selects next.

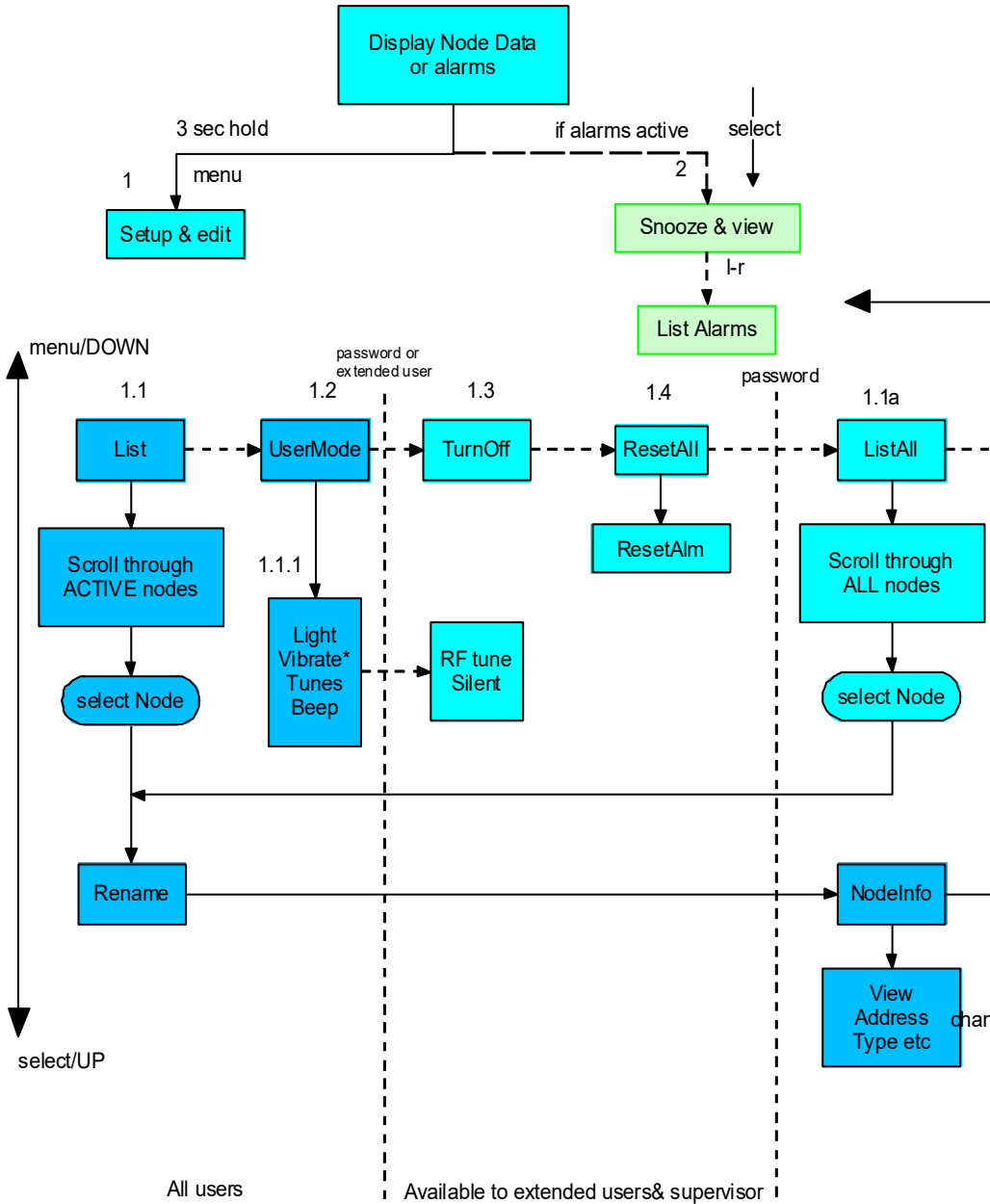


Next step will be to accept the value with left key, repeat entry with the left key or abort the process with the Menu key.



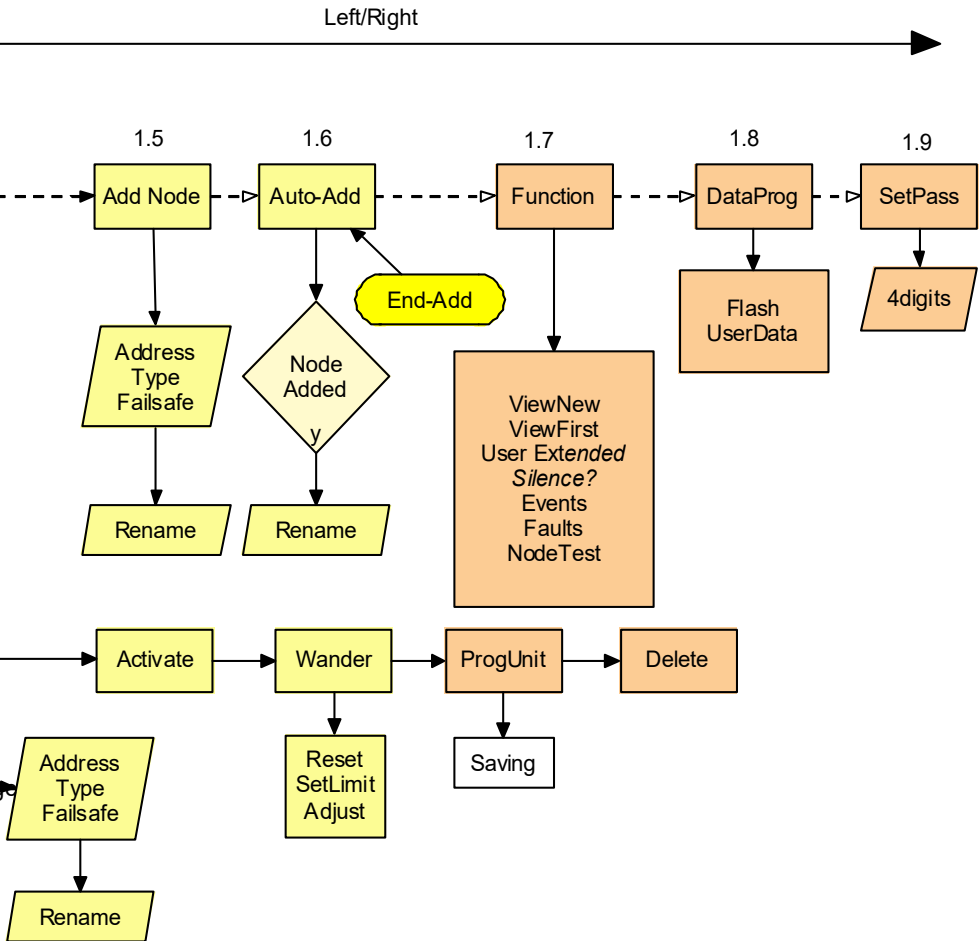
Left and right keys change the option. Select key to activate the selected option, menu key to abort leaving function unchanged.

# USER Menu Structure





# Supervisor Menu Structure



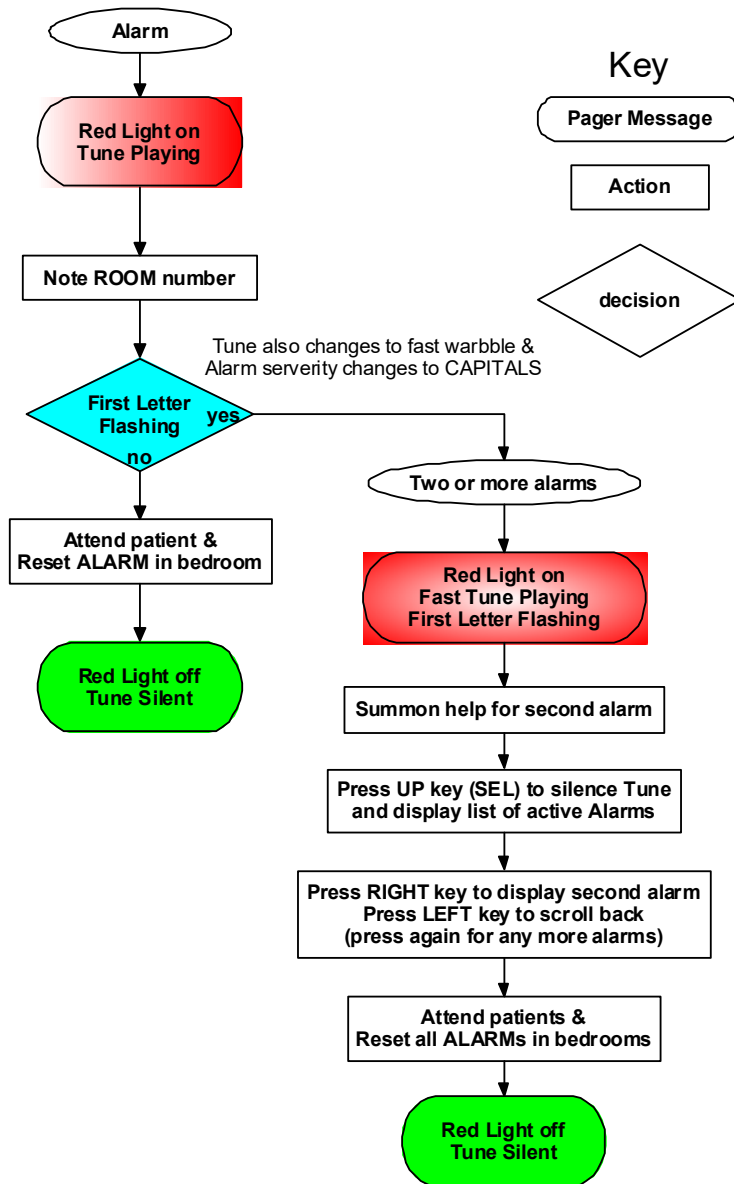
Supervisor only

Version 8.12+

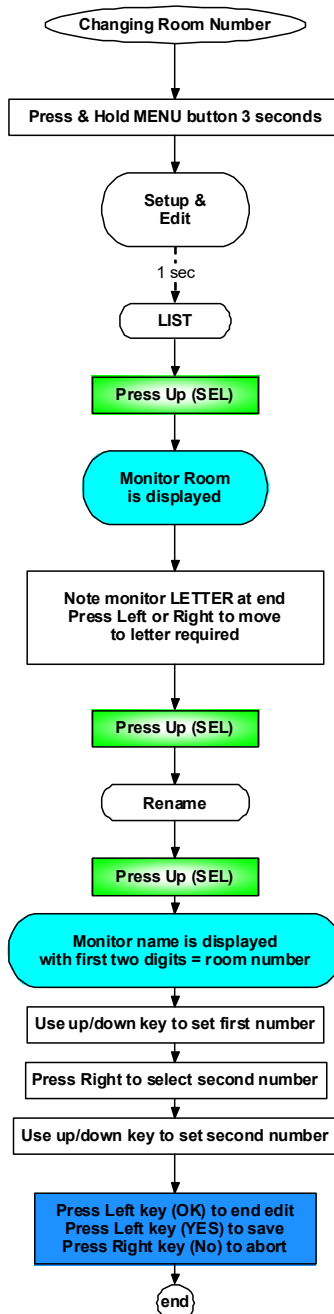
# Details of Menu Features

Standby Operation			
1	Enter "Set-Up & Edit"	After pressing MENU for 3 seconds	See next Main Menu table
2	Snooze & View	Press select to silence any alarm for 5 minutes	Left/right will now list all active alarms. Menu returns to standby.
1. Main Menu			
1.1	List	List all the ACTIVE nodes with access to a sub-menu of features see 1.1	Only supervisor can see Deactivated nodes and reactivate them
1.2	User Mode	Change main user features see 1.2	E.g Light, sounds and vibration
Password(bypassed for extended users)			
1.3	Turn off	Turns off the pager	Restart by pressing MENU key 3 seconds
1.4	Reset All	Reset all alarms	They will be reactivated if the node is still transmitting an alarm message
Password			
1.2 User_mode sub-menu			
	Light	Turns backlight on/off	
	Vibrate	Turn on/off vibrate	Tunes automatically on if vibrate off unless SILENCE enabled in FUNCTION
	Tunes	Turn on/off Tunes	
	Key Beep	Silences the beep on key press	
Password(bypassed for extended users)			
	RF Tune	Enables tune for RF Fail Alarms	Useful to silence alarm if equipment node off
1.1 List Function			
1.1	List	Scroll left & right through the list of nodes and press up to select one for detailed menu	List only shows activated nodes
	Rename	The node name can be changed	
Password			

# Answering an Alarm Call



# Pod Staff: Changing a Room Allocation



# Maintenance

## ***Cleaning***

The unit is sealed to level IP61 and can be cleaned according to our standard procedure below.

### **Technique B**

Wiping with cotton wool pads moistened (compressed until dripping stops) with a mild detergent (0.5% washing up liquid) solution.

## ***Charging***

The charger is plugged into the side connector and then into a mains power supply. The display will then show “charging”. A full charge takes 24 hours and the pager will feel warm to the touch if a boost charge is needed (indicated by the < symbol on the display).

Once a good level of charge is reached the symbol changes to #

## ***Battery Use***

The display will show “battery” and the state of the charge will be indicated by the number of bars next to the battery symbol

When the battery is getting low the display will change to “Bat<10%”. There will still be a few hours left, which may allow for a shift to end, but charging should be imminent

When the battery gets critical the display changes to “Act Now” and an audible alert will sound that cannot be permanently silenced. There is only a short time left and charging must commence immediately or protection will be lost.

# Safety Notices



This symbol indicates there are warnings and precautions associated with the use of this equipment. This instruction manual should be carefully read and understood before using the equipment.

1. Ensure that the sensor cable is routed and secured to avoid the risk of entanglement or strangulation.
2. Ensure the power cable is routed to avoid a trip hazard
3. Regularly check the power supplies for damage and potential shock risks
4. Clean and disinfect each item regularly in accordance with information on page [13](#)
5. Ensure, by testing, that alarms are announced at the carer's location(s)
6. Use only the power supply and batteries recommended
7. Operate power supply and charge pager away from direct heat and uncovered.
8. As with all medical electronic equipment there is potential for the equipment to interfere with or be effected by interference from other electrical or electronic devices. For this reason avoid placing the monitor, sensor or connecting cable in close proximity to sensitive electronic devices or devices which produce strong electromagnetic fields such as radio transmitters, mobile phones or power cables.
9. Only use the monitor with accessories approved for use with this product and only in accordance with instructions.
10. If the equipment is modified in any way, appropriate inspection and testing must be conducted to ensure continued safe use of the equipment.
11. The carer must conduct a risk assessment to determine if the level of reliability offered by the total system is sufficient or if additional monitoring is needed. Contact the manufacturer for assistance with Risk Evaluation Tools.
12. Some accessories are fitted with small screws and have plastic bags. Ensure these do not come into the possession of vulnerable patients who might choke on them.
13. The full pager specification is met as a portable unit. It may, however, be affected by mains borne interference while on charge, but the safelink safety function remains unaffected.

- The system is designed for use in an indoor residential environment of 10-30°C and 90% RH max
- When not required, isolate from the mains by removing the power supply plug
- The service life for the monitor is expected to exceed 5 years.

The system complies with 93/42/EEC as an accessory suitable to support Medical Device for use in a Home Healthcare environment  
The system complies with EN60601 for Class 2 Electrical Safety and does not need a protective earth and Group 1 Class B for EMC in a Home Healthcare environment  
The system has a radio receiver compliant to EN300-220 operating at 434.075MHz wideband

This system is certified to the following European Directives

93/42/EEC

Medical Devices Directive

2014/53/EU

RTT&E Directive

2011/65/EU

Permitted Materials (UK)

*<sup>1</sup>Alert-it Care Alarms are social aids designed and manufactured in accordance with 93/42/EEC as Class 1 Medical Devices. They are intended to improve the vigilance of carers to distressing side-effects of various diseases, such as Epilepsy and Dementia. They do not monitor vital physiological processes and should not be expected to diagnose any disease or predict the onset of any symptoms.*



None of the components, including batteries should be disposed of as Domestic Waste. For information on disposal contact ITs Designs Ltd.

## Support

For technical support please fax or EMail:

HELP: 0845 2179951

FAX : 0845 2179953

Support@itsdesigns.co.uk

Designed by:

ITs Designs Ltd

Leicester

...using technology to care for carers

*The Alert-it system has been designed with due regard to reliability and integrity. While it offers a highly vigilant monitoring method, it is always possible that a distress condition can go undetected for a variety of reasons (including malfunction) and in life threatening situations it is advisable to use the Alert-it system in conjunction with additional monitoring techniques (e.g. video). Neither the manufacturer nor its agent can accept legal responsibility to provide a system that is infallible. The carer is responsible for assessing the risks of using this equipment and any settings pertaining to it.*



### Address

Atherstone House  
Desford  
Leicester  
LE9 9FE

### Call

0845 217 9952  
01530 239 900

### Visit

[www.alert-it.co.uk](http://www.alert-it.co.uk)

### Social

[www.facebook.com/AlertitCareAlarms/](https://www.facebook.com/AlertitCareAlarms/)

or join our supportive  
*Epilepsy Forum*

