

## Companion Monitor Set up Guide

### Installation Handbook



One of a range of Alert-it Care Alarms available from:



UH1102B

Alert-it Care Alarms, Atherstone House, Merry Lees  
Industrial Estate, LE9 9FE  
0845 2179951, [www.alert-it.co.uk](http://www.alert-it.co.uk), [sales@alert-it.co.uk](mailto:sales@alert-it.co.uk)

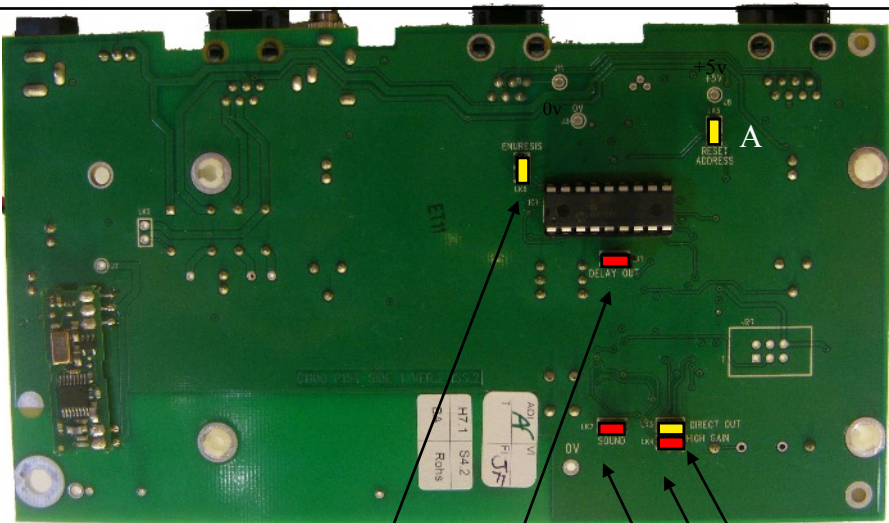


This handbook should be read as an Appendix to UH1102 P154 Handbook, which contains essential safety and operational information. This is for setting advanced features, which must be done by someone who is competent with technology and has sufficient the knowledge about the client to asses the effects of any changes.

Full servicing documentation is available for purchase from iTs Designs Ltd if required

### Setting Options by Links

To access the links, remove the aerial by unscrewing to ease the operation. Invert the unit and remove the 4 screws that hold the base. Pull away the base and be careful not to dislodge the battery and screw driver. Most functions are changed by adding or removing links, as detailed below. Two features follow which use a programming sequence depending on links and the time delay switch setting



	Present	Absent
LK1	After bed vacation is detected there will be 20 second audible warning before the alarm is raised	Bed vacation alarm raised immediately after the set time delay
LK2	Factory fitted only	
LK3	Changes Sound sensor from transient to level monitoring. Used for Enuresis	Default for transient sound detection
LK4	Default for high sensitivity to transient sounds	Used with sound level monitoring (LK3 fitted) to reduce sensitivity & Enuresis
LK6 LK7	LK7 Fitted for ENURESIS detection	LK6 Fitted for SOUND detection

Do not change LK2-7 without reference to iTs Designs as the software functionality can be affected

### Reset Communication Address

- Set the Time Delay switch to the desired address (1-10 with 0=10)
- Fit link LK1 (DELAY OUT)
- Temporarily connect link A (RESET ADDRESS )
- Power-up or press RESET to initiate reprogramming of the address
- There will be a 5 second confirmation period during which both alarm lights will flash together
- Removing the “ADDRESS RESET” link or turning the unit off before the lights go out will abort the programming and not affect the unit.
- When the lights no longer flash, remove link A and the unit will the revert to normal operation with the new address.
- Link LK1 may now be removed if required. (remember to press RESET to activate any change)

### Reset Bed Occupancy Time and Operation

•Set the Time Delay switch to the desired time delay according to the table

•Remove link LK1 (DELAY OUT)

•Temporarily connect link A ( RESET ADDRESS)

•If a Bed Occupancy mat is no longer required, then remove it. Otherwise connect the mat and operate it (eg by sitting on it).

•Power-up or press RESET to initiate reprogramming of the address

•There will be a 5 second confirmation period during which the alarm lights will flash alternatively

•Removing the “ADDRESS RESET” link or turning the unit off before the lights go out will abort the programming and not affect the unit.

•When the lights no longer flash, remove link A and the unit will the revert to normal operation with the new time delay and the Bed Mat input enabled or disabled as required

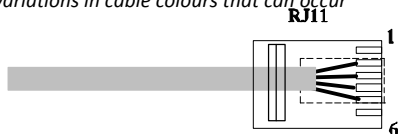
•Link LK1 may now be replaced if required. (remember to press RESET to activate any change)

	Vacant Time
0	5 sec
1	10 sec
2	15 sec
3	20 sec
4	30 sec
5	2 min
6	4 min
7	6 min
8	17 min
9	33 min

*Factory default is Bed Occupancy enabled with 6 minute delay followed by 20 second audible tone (LK1 fitted)*

## Connection details of OUTPUT connector and optional Lead

Please note the two variations in cable colours that can occur



Pin	Function	P145J (a)	P145J (b)
1	Switch Normally Closed		
2	Supply (+12v)	Black	Red
3	Switch Normally Open	Red	Blue
4	Switch common	Green	Green
5	0v	Yellow	White
6	Instant Alarm Input		

The above applies to P154 version 6 and above (identified by coloured markings on all the connectors). Consult the manufacturer for earlier versions

## Notes

### Transient Sound

- Fit Transient Sound Version of program C1106 (see figure)
- Ensure LK4 is fitted (high gain) and LK3 not fitted(direct output)
- Sensitivity sets gain of microphone (Clockwise = Most sensitive)
- The time delay setting now becomes:

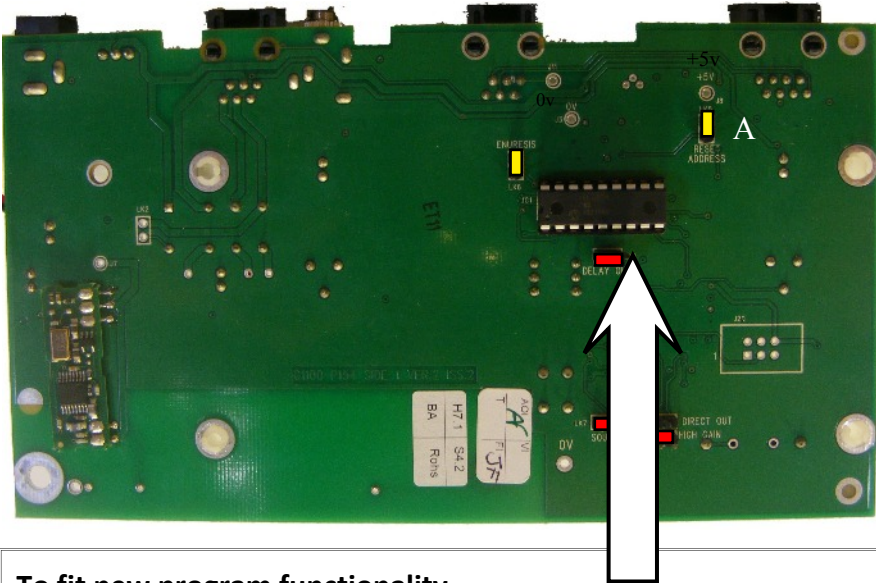
Setting	Spasm Time	Sound Delay	Sound Repeat Time
0	2.5	2.5	1.5
1	5.5	5.5	1.5
2	10	7	2
3	15	7	2
4	20	10	3
5	25	10	3
6	30	10	3
7	40	10	3
8	50	10	3
9	60	10	3

## Sound Level Detection

- Fit Sound Level Version of program C1106 (see figure)
- Ensure LK4 is not fitted (high gain) and LK3 is fitted (direct output)
- Sensitivity sets sound level threshold (Anti-clockwise = most sensitive)
- The time delay setting now become as in the above table
  - The continuous sound being detected can stop for up to 1 second without upsetting the detection process (allowing the patient to take a breath )

Setting	Spasm Time	Sigh Time
0	10	1.5
1	15	1.5
2	10	2
3	15	2
4	20	2
5	25	2
6	10	2.5
7	15	2.5
8	20	3
9	25	3

## Fitting a new program chip



### To fit new program functionality

1. Switch off the unit.
2. Remove 4 case screws to expose circuit board (as above)
3. Locate and remove IC1, by prising out of socket. (The adjustment screwdriver can make an excellent tool for this). Note the polarisation pip and insert new chip in the same orientation.
4. Re-assemble case (ensure battery door aligns with battery)

**Support**

For technical support please fax or Email:

HELP: 0845 2179951

FAX : 0845 2179953

[enquiries@alert-it.co.uk](mailto:enquiries@alert-it.co.uk)

Designed by:  
ITs Designs Ltd  
Leicester  
LE9 9FE UK

...using technology to care for carers